

# \$675,300

## House & Land Package

# Crescent 17



## Lot 121 Aspect | Austral by Rawson Communities Estate

Lot size 387.6m<sup>2</sup> (16.77m x 22.395m)

3 bed

2 bath

2 car

17.02  
SQ

### Core Inclusions:

- Urban facade
- Fixed Site Costs
- Coloured Concrete Driveway & Path
- Carpet to Bedrooms & Tiles to living areas
- 60cm Westinghouse Appliances
- Mirrored Sliding Robes
- Downlight Package to Kitchen/Living Area
- Overhead Cabinetry to Kitchen
- 3 Coat Paint System
- Sectional Garage Door including Remote
- Colorbond Roof including Anticon Blanket
- Engineered Steel Frames & Trusses

### Package inclusions Crescent 17 with Urban façade

Designed specifically for corner lots, the Crescent takes advantage of the secondary street frontage and maximises space with a combined family, dining and kitchen area. The open planned living creates a link between indoor and outdoor that the entire family will enjoy.

## BUILD SMART

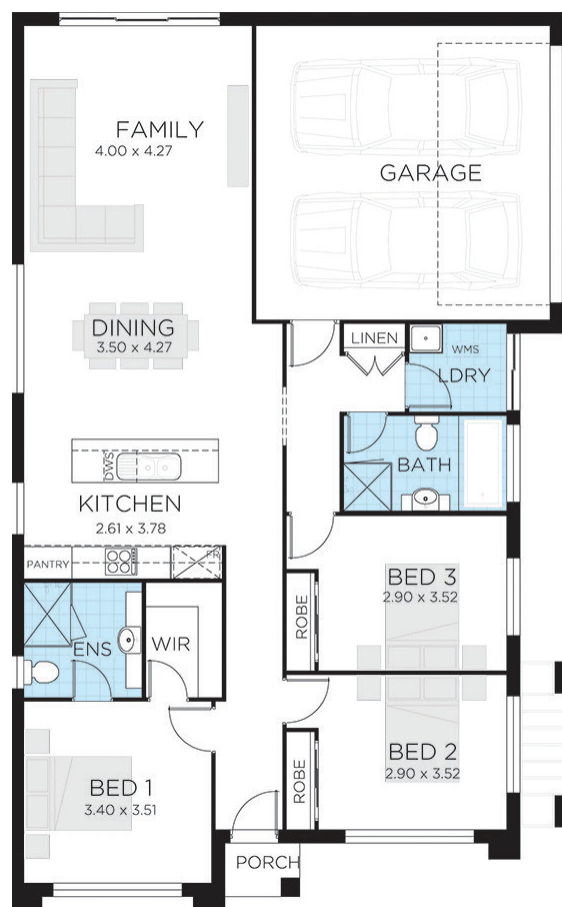
T. 1300 921 383  
E. [hello@thrivehomes.com.au](mailto:hello@thrivehomes.com.au)  
[thrivehomes.com.au](http://thrivehomes.com.au)

# Thrive Homes

# Lot 121 Aspect | Austral by Rawson Communities Estate

## AUSTRAL

Living	122.85m <sup>2</sup>
Garage	33.55m <sup>2</sup>
Porch	1.4m <sup>2</sup>
Alfresco	0.0m <sup>2</sup>
Total	158.14m <sup>2</sup>
Overall Width	10.32m
Overall Length	16.53m



**T. 1300 921 383**

**[thrivehomes.com.au](http://thrivehomes.com.au)**

**Thrive** Homes

Disclaimer: Site costs are fixed for all lots with up to 1m of fall across the site and soil classification for 'M' class slabs and does not cover costs incurred if rock is found on any lots. Thrive Homes House and Land Packages are subject to availability, developers design review panel, bushfire requirements & statutory approval. Thrive Homes House & Land Packages will be determined upon tender requests for individual lots and may vary due to site conditions and statutory authority requirements. Whilst every effort is made to provide accurate information images are for illustrative purposes and intended to provide a visual guide only. Packages do not include stamp duty, legal fees or any other costs incurred associated to the purchase. Thrive Homes is responsible for the building contract for the construction of the home only. Customers will be required to enter into a separate contract for the purchase of the land component of the package with the relevant developer. Packages may change as a result of variations to the inclusions or specifications required by the purchaser. Refer to individual contracts for final details and terms and conditions. Thrive Homes reserves the right to withdraw any House and Land Package at any time or if the land or home become unavailable or is sold. Details are correct at time of printing and subject to change without notice or obligation.

Printed 11/03/2020.  
Builders Lic No. NSW 301349C. ABN 99 613 679 333